

# KYOTO UNIVERSITY

FACTS AND FIGURES 2015



## CONTENTS

- 01 Chronological Table
- 03 Organization Chart
- 04 Staff and Students
- 05 Finance
- 06 Industry-Academia Collaboration
- 07 University Facilities
- 08 List of Overseas Offices and Facilities
- 11 Academic Exchange Memoranda
- 15 Researchers from Abroad
- 16 Researchers going Abroad
- 17 Students from Abroad
- 19 Students going Abroad
- 21 Kyoto University International Symposia

# CHRONOLOGICAL TABLE

## 1897 Founded as Kyoto Imperial University.

- College of Science and Engineering established.
- 1899 Colleges of Law and Medicine established. University Library and University Hospital established.
- 1906 College of Letters established.
- 1914 College of Science and Engineering divided into College of Science and College of Engineering.
- 1919 Colleges reorganized into five faculties under the new University Ordinance. Faculty of Economics established.
- 1923 Faculty of Agriculture established.
- 1926 Institute for Chemical Research established.
- 1939 Institute for Research in Humanities established.
- 1941 Chest Disease Research Institute and Institute of Atomic Energy established.
- 1944 Wood Research Institute established.
- 1946 Research Institute for Food Science established.

## 1947 Renamed Kyoto University.

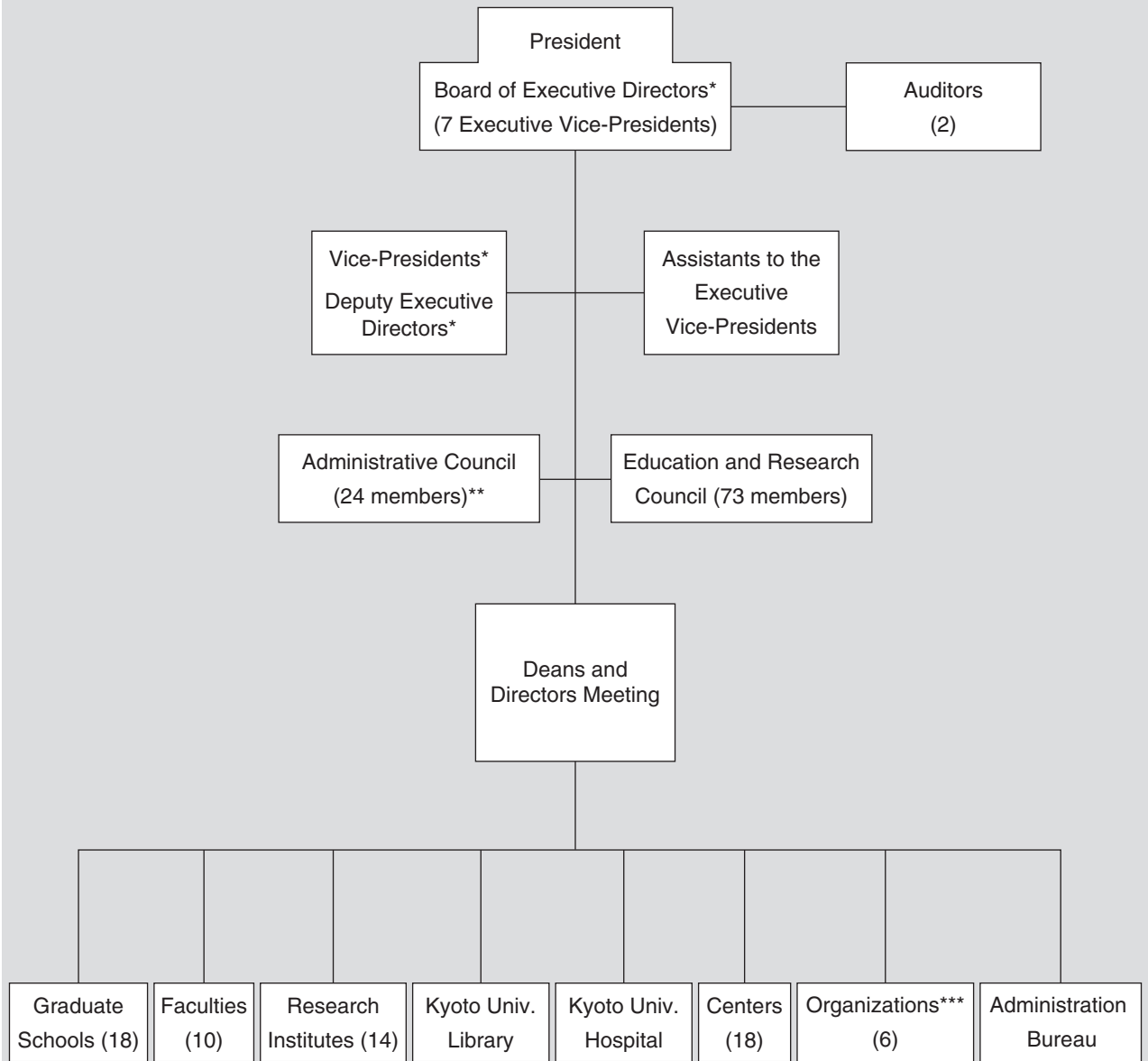
- 1949 Reorganized on four-year schooling basis (with the exception of six years for medicine) under the new education system. Faculty of Education established. Branch School established for general education of freshmen and sophomores.
- 1951 Disaster Prevention Research Institute established.
- 1953 Graduate courses under the new system opened. Yukawa Institute for Theoretical Physics established.
- 1954 Branch School renamed College of Liberal Arts and Sciences.
- 1956 Institute for Virus Research established.
- 1960 Faculty of Pharmaceutical Sciences established.
- 1962 Institute of Economic Research established.
- 1963 Research Institute for Mathematical Sciences and Research Reactor Institute established.
- 1965 Center for Southeast Asian Studies established.
- 1966 Center for Student Health established.

- 1967 Primate Research Institute established.
- 1969 Data Processing Center established.
- 1971 Radioisotope Research Center established.
- 1972 Research Center for Sports Science established.
- 1975 College of Medical Technology established.
- 1976 Plasma Physics Laboratory and Radiation Biology Center established.
- 1977 Environment Preservation Center and Center for Archaeological Operations established.
- 1978 Educational Center for Information Processing established.
- 1980 Research Center for Biomedical Engineering established.
- 1981 Radio Atmospheric Science Center established.
- 1986 Center for African Area Studies established.
- 1988 Center for Molecular Biology and Genetics established.
- 1990 Center for Student Exchange established.
- 1991 Graduate School of Human and Environmental Studies and Center for Ecological Research established.
- 1992 College of Liberal Arts and Sciences reorganized and renamed Faculty of Integrated Human Studies.
- 1994 Research Center for Higher Education established.
- 1995 Venture Business Laboratory established.
- 1996 Graduate School of Energy Science established. Institute of Atomic Energy and Plasma Physics Laboratory merged into Institute of Advance Energy. Student Counseling Center was established.
- 1997 The Kyoto University Museum established. Educational Center for Information Processing reorganized and renamed Center for Information and Multimedia Studies.
- 1998 Graduate School of Asian and African Area Studies and Graduate School of Informatics established. Chest Disease Research Institute reorganized and renamed Institute for Frontier Medical Sciences.

- 1999 Graduate School of Biostudies and Counseling Center established.
- 2000 Radio Atmospheric Science Center reorganized and renamed Radio Science Center for Space and Atmosphere. University Archives established.
- 2001 International Innovation Center established.
- 2002 Center for Data Collection and Analysis established. Graduate School of Global Environmental Studies established. Center for Data Processing and Center for Information and Multimedia Studies reorganized and renamed Academic Center for Computing and Multimedia Studies. Research Center for Low Temperature and Materials Sciences and Fukui Institute for Fundamental Chemistry established.
- 2003 Seto Marine Biological Laboratory, University Forest, Subtropical Plant Institute and Fisheries Research Station merged into Field Science Education and Research Center. Research Center for Higher Education reorganized and renamed Center for the Promotion of Excellence in Higher Education. Institute for the Promotion of Excellence in Higher Education and Law School established. College of Medical Technology merged into Graduate School of Medicine.
- 2004 Kyoto University incorporated in accordance with the National University Corporation Law.**  
Wood Research Institute and Radio Science Center for Space and Atmosphere unified as Research Institute for Sustainable Humanosphere. Center for Southeast Asian Studies given institute status.
- 2005 The Organization for the Promotion of International Relations, Environment, Safety, and Health Organization, International Innovation Organization, Institute for Information Management and Communication, and Library Network established. Center for Student Exchange reorganized and renamed The International Center.
- 2006 School of Government established. Graduate School of Management established. Center for Integrated Area Studies established. Institute of Sustainability Science established. Center for Women Researchers established.
- 2007 Kokoro Research Center established. International Innovation Organization reorganized and renamed Kyoto University Office of Society-Academia Collaboration for Innovation. International Innovation Center reorganized and renamed Innovative Collaboration Center. Institute for Integrated Cell-Material Sciences established.
- 2008 Wildlife Research Center established. Center for Archaeological Operations reorganized and renamed Center for Cultural Heritage Studies.
- 2009 Young Researcher Development Center established.
- 2010 Center for the Promotion of Interdisciplinary Education and Research established. Center for iPS Cell Research and Application established.
- 2012 Young Researcher Development Center renamed the Hakubi Center for Advanced Research.
- 2013 Graduate School of Advanced Integrated Studies in Human Survivability established. Institute for Liberal Arts and Sciences established.
- 2014 The Center for Women Researchers and the Gender Equality Promotion Office merged to form the Gender Equality Promotion Center.

# ORGANIZATION CHART

(As of April 1, 2014)



\* Each of the (Executive) Vice-Presidents and Deputy Executive Directors is in charge of a different area of university affairs.

\*\* 24 members, 12 of whom are Kyoto University faculty and staff.

\*\*\* Including the Organization for the Promotion of International Relations.

# STAFF AND STUDENTS

## University Staff As of May 1, 2014

Position	Number
President	1
Executive Directors	7
Auditors	2
Professors	1,048
Associate Professors	771
Senior Lecturers	166
Assistant Professors	847
Research Associate	4
Non-teaching Staff	2,625
Specialist Staff	10
<b>Total</b>	<b>5,481</b>

## Enrollment (As of May 1 of each year)

Year	Undergraduate	Graduate	Total
2014	13,580	9,226	<b>22,806</b>
2013	13,585	9,323	<b>22,908</b>
2012	13,551	9,244	<b>22,795</b>
2011	13,537	9,282	<b>22,819</b>
2010	13,473	9,314	<b>22,787</b>

## Number of Graduates

Academic Year (Apr. 1–Mar. 31)	Undergraduate	Graduate		Total
		Master's Course	Doctoral Course	
2013	2,891	2,215	674	<b>5,780</b>
2012	2,901	2,134	735	<b>5,770</b>
2011	2,893	2,171	780	<b>5,844</b>
2010	2,842	2,188	688	<b>5,718</b>
2009	2,825	2,170	755	<b>5,750</b>

## Number of Degrees Conferred

Academic Year (Apr. 1–Mar. 31)	Master's Degree	Doctoral Degree
		New System
2013	2,215	745
2012	2,134	822
2011	2,171	891
2010	2,188	776
2009	2,170	870

## Number of Professional Degrees Conferred

Academic Year (Apr. 1–Mar. 31)	Law School	School of Public Health	School of Government	School of Management	Total
2013	153	26	41	90	310
2012	160	28	38	79	305
2011	164	28	38	83	313
2010	202	28	50	66	346
2009	192	38	42	71	343

## Financial Statement

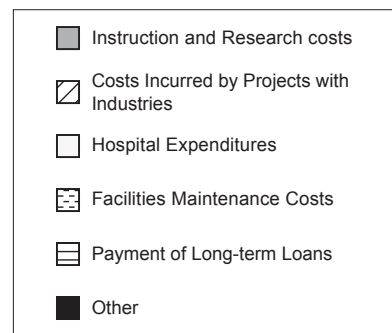
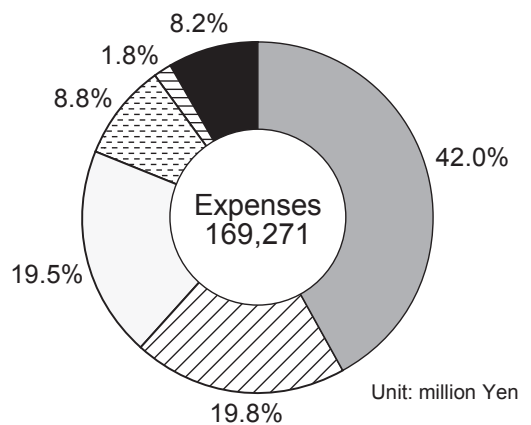
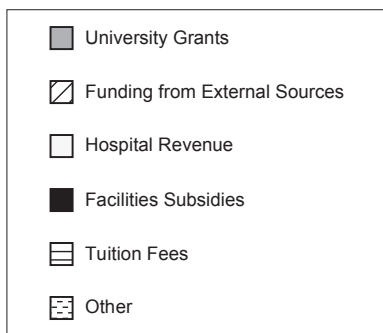
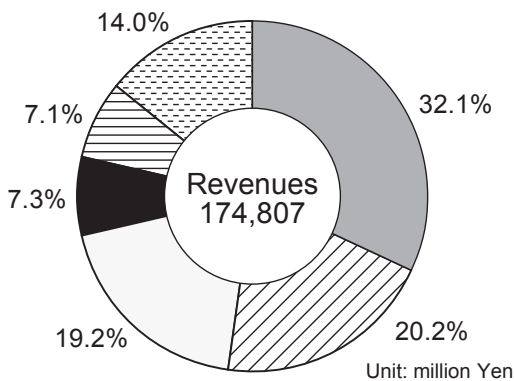
\* Calculations based on the exchange rate as of March 31, 2014 (US\$1=¥102.92).

### Revenues in Fiscal Year 2013 (Apr. 1–Mar. 31)

Category	Million yen	Million US \$
University Grants	56,061	544.70
Facilities Subsidies	12,826	124.62
Tuition Fees	12,393	120.41
Hospital Revenue	33,633	326.79
Funding from External Sources	35,335	343.32
Other	24,559	238.62
<b>Total</b>	<b>174,807</b>	<b>1698.47</b>

### Expenses in Fiscal Year 2013 (Apr. 1–Mar. 31)

	Million yen	Million US \$
Instruction and Research costs	71,016	690.01
Hospital Expenditures	32,924	319.90
Facilities Maintenance Costs	14,864	144.42
Costs Incurred by Projects with Industries	33,442	324.93
Payment of Long-term Loans	3,110	30.22
Other	13,915	135.20
<b>Total</b>	<b>169,271</b>	<b>1644.69</b>



# INDUSTRY-ACADEMIA COLLABORATION

## Invention Disclosure

Fiscal Year (Apr. 1–Mar. 31)	Number of Invention Disclosure Forms Submitted
2013	393
2012	443
2011	412
2010	396
2009	405

## Patent Application and Acquisition

Fiscal Year (Apr. 1–Mar. 31)	DOMESTIC		FOREIGN	
	Number of Patent Applications	Number of Patents Issued	Number of Patent Applications <sup>1</sup>	Number of Patents Issued <sup>2</sup>
2013	290 (202)	156 (108)	331 (215)	101 (63)
2012	273 (187)	132 (98)	313 (192)	75 (43)
2011	237 (174)	109 (80)	298 (196)	79 (23)
2010	230 (169)	68 (38)	261 (150)	41 (25)
2009	231 (166)	45 (21)	224 (107)	37 (17)

The Number of joint applications or co-owned patents is shown in brackets.

<sup>1</sup> Applications under the Patent Cooperation Treaty etc. count as one, regardless of the number of designated countries.

<sup>2</sup> The number of patents issued count as one for each country.

## Number of Current Patents

Domestic	International
610 (382)	345 (189)

## Exploitation of Intellectual Property

Fiscal Year (Apr. 1–Mar. 31)	PATENTS		COPYRIGHTS <sup>1</sup>		RESEARCH MATERIALS		TOTAL
	Number of Licenses <sup>2</sup>	Revenue (thousand yen)	Number of Licenses <sup>2</sup>	Revenue (thousand yen)	Number of Licenses <sup>2</sup>	Revenue (thousand yen)	Revenue (thousand yen)
2013	139	310,530	22	4,515	56	11,901	326,946
2012	115	191,144	16	9,965	32	53,217	254,326
2011	101	184,594	14	4,172	25	18,801	207,567
2010	59	154,575	6	2,182	28	15,865	172,622
2009	58	65,432	8	3,675	46	23,917	93,024

<sup>1</sup> Databases, computer programs, and digital contents (except research papers, books, and reports)

<sup>2</sup> Including assignments

## Collaborative Research

Fiscal Year (Apr. 1–Mar. 31)	Number of Cases	Revenue (thousand yen)
2013	1008	6,817,133
2012	933	6,649,823
2011	844	5,782,291
2010	861	6,231,529
2009	813	5,613,524

## Sponsored Research

Fiscal Year (Apr. 1–Mar. 31)	Number of Cases	Revenue (thousand yen)
2013	903	16,465,535
2012	826	14,574,873
2011	847	12,718,523
2010	780	11,626,147
2009	728	14,137,356

# UNIVERSITY FACILITIES

## Library Collection

As of March 31, 2014

	Number of Books			Number of Magazines and Periodicals		
	Japanese	International	Total	Japanese	International	Total
Main University Library	647,822	263,082	910,904	14,395	9,822	24,217
Other University Libraries and Reference Rooms	2,906,923	2,977,030	5,883,953	47,100	47,450	94,550
Combined Total	3,554,745	3,240,112	6,794,857	61,495	57,272	118,767

## Kyoto University Hospital

Fiscal Year (Apr. 1–Mar. 31)	Number of Beds	Number of Inpatients	Number of Outpatients
Kyoto University Hospital	1,121	352,463	689,209

## Number of Visitors to the Kyoto University Museum

Fiscal Year (Apr. 1–Mar. 31)	Individuals	Groups	Paying Visitors	Non-Paying Visitors	Total
2013	14,210	1,256	15,466	27,968	43,434
2012	18,439	1,218	19,657	36,106	55,763
2011	14,400	1,036	15,436	26,829	42,265
2010	20,840	1,030	21,870	30,358	52,228
2009	13,843	916	14,759	20,243	35,002

## Number of Visitors to the Seto Marine Biological Laboratory Aquarium

Fiscal Year (Apr. 1–Mar. 31)	Individuals	Groups	Paying Visitors	Non-Paying Visitors	Total
2013	37,451	2,153	39,604	5,106	44,710
2012	59,084	2,658	61,742	7,315	69,057
2011	54,806	2,696	57,502	6,656	64,158
2010	54,608	2,942	57,550	7,076	64,626
2009	52,483	2,621	55,104	7,581	62,685



# LIST OF OVERSEAS OFFICES AND FACILITIES

	Name	Location	Year Established	Affiliation
1	Kyoto University-Renmin University Joint Research Center	Beijing, China	2008	Graduate School of Economics
2	Cooperative Research and Education Center for Environmental Technology Kyoto University-Tsinghua University	Shenzhen, China	2005	Graduate School of Engineering
3	Global Center of Excellence Kyoto University-Institut Teknologi Bandung for GCOE Joint Research and Education Center	Bandung, Indonesia	2008	
4	the Joint Education and Research Centre on AIT Campus under the Global Centre of Excellence, Kyoto University	Pathumthani, Thailand	2008	
5	Global Center of Excellence Kyoto University-the Municipal Corporation of Greater Mumbai (MCGM) for GCOE Joint Research and Education Center	Mumbai, India	2009	
6	Global Centre of Excellence Kyoto University-Centre for Maritime Studies National University of Singapore Transport Logistics Joint Research Centre	Singapore, Singapore	2008	
7	Kyoto University-University of Malaya Overseas Base in Malaysia for Education and Research	Kuala Lumpur, Malaysia	2010	Graduate School of Science
8	Satellite Office at Chulalongkorn University	Bangkok, Thailand	2003	
9	Research Base for Biodiversity of African Tropical Forest	Libreville, Gabon	2009	
10	Satellite Office at Institut Teknologi Bandung	Bandung, Indonesia	2003	Graduate School of Science/Research Institute for Sustainable Humansphere
11	CHAIN Peru Station	Ica, Lima, Peru	2010	Graduate School of Science, Observatories
12	Khon Kean Research Office of the Graduate School of Agriculture, Kyoto University	Khon Kean, Thailand	1996	Graduate School of Agriculture
13	Japanese Research-Team Laboratory, Kinabalu Park Headquarters	Kota Kinabalu, Malaysia	1995	
14	Japanese Research-Team Laboratory, Deramakot Forest Reserve	Sandakan, Malaysia	2003	
15	Kyoto University Research Office at Kasetsart University	Bankok, Thailand	2014	

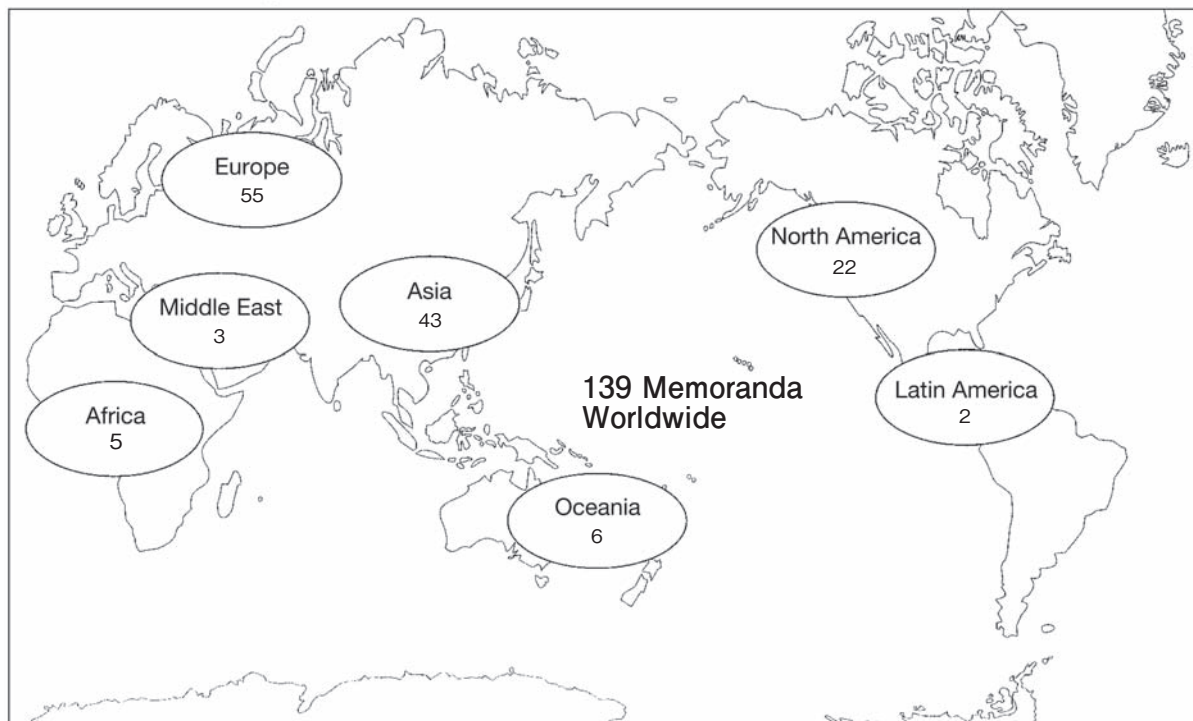
	Name	Location	Year Established	Affiliation
16	Ethiopia Field Station	Addis Ababa, Ethiopia	2003	Graduate School of Asian and African Area Studies
17	Cameroon Field Station	Ndongo Village, Cameroon	2003	
18	Nairobi Field Station	Nairobi, Kenya	2003	
19	Zambia Field Station	Lusaka, Zambia	2003	
20	Tanzania Field Station	Dar es Salaam, Tanzania	2003	
21	Namibia Field Station	Windhoek, Namibia	2008	
22	Niger Field Station	Niamey, Niger	2012	
23	Laos Field Station	Vientiane, Laos	2002	Graduate School of Asian and African Area Studies/ Center for Southeast Asian Studies
24	Makassar Field Station	Makassar, Indonesia	2003	
25	Cambodia Field Station	Phnom Penh, Cambodia	2010	
26	Indonesia Pekanbaru Field Station	Pekanbaru, Indonesia	2010	
27	Myanmar Field Station	Yangon, Myanmar	2003	
28	Hue Office	Hue, Vietnam	2006	Graduate School of Global Environmental Studies
29	Hanoi Office	Hanoi, Vietnam	2008	Graduate School of Global Environmental Studies/ Graduate School of Engineering
30	Shenzhen Office	Shenzhen, China	2008	
31	Danang Office	Danang, China	2010	
32	Thai Research Station Collaborative Research Laboratory	Pathumthani, Thailand	2003	Institute of Advanced Energy
33	Equatorial Atmosphere Radar	Bukittinggi, Indonesia	2001	Research Institute for Sustainable Humansphere
34	RISH-RDUB Satellite Office	Bogor, Indonesia	2004	
35	MHP Acacia Research Office	Muaraenim, Indonesia	2005	
36	Seattle Satellite Office	Seattle, USA	1996	Disaster Prevention Research Institute

	Name	Location	Year Established	Affiliation
37	Research Project on Bonobos in the Luo Reserve	Djolu, Congo	1973	Primate Research Institute
38	Bossou-Nimba Research Station	Bossou, Guinea	1976	
39	Kalinzu Forest Research Project by the Primate Research Institute	Bushenyi, Uganda	1997	
40	Orangutan Rehabilitation Project	Perak, Malaysia	2011	
41	Bangkok Liaison Office	Bangkok, Thailand	1963	Center for Southeast Asian Studies
42	Jakarta Liaison Office	Jakarta, Indonesia	1970	
43	Kuching Field Station	Kuching, Malaysia	2011	
44	Kyoto University Liaison Office at Tsinghua University	Beijing, China	2006	Office of Society-Academia Collaboration for Innovation
45	Field Station for Tropical Forest and Biodiversity Studies	Miri, Malaysia	1991	Center for Ecological Research
46	CIAS Lima Office	Lima, Peru	2006	Center for Integrated Area Studies
47	Kyoto University African Ape Expedition	Kigoma, Tanzania	1965	Wildlife Research Center
48	African Anthropological and Biological Field Research Center	Arusha, Tanzania	2006	
49	Kuala Sungai Danum Research Station	Danum Valley, Malaysia	2009	
50	iCeMS Satellite at NCBS-inStem	Bangalore, India	2011	Institute for Integrated Cell-Material Sciences
51	Vietnam National University, Hanoi-Kyoto University Collaboration Office	Hanoi, Vietnam	2010	Organization for the Promotion of International Relations (OPIR)

A	European Center London Office, Kyoto University	London, UK	2014	Kyoto University
B	European Center Heidelberg Office, Kyoto University	Heidelberg, Germany	2014	Kyoto University
C	ASEAN Center, Kyoto University	Bangkok, Thailand	2014	Kyoto University

# ACADEMIC EXCHANGE MEMORANDA

## Distribution Map of Partner Universities and Consortia



As of January 1, 2015

Country/Region	Institution	Year of Conclusion	★
ASIA			
Bhutan	Royal University of Bhutan	2013	
Brunei	Universiti Brunei Darussalam	2014	
China	Northwest University 西北大学	1980	
	Peking University 北京大学	1983	★
	Wuhan University 武汉大学	1995	★
	Tsinghua University 清华大学	1998	★
	Fudan University 复旦大学	2002	★
	Zhejiang University 浙江大学	2003	★
	The University of Science and Technology of China 中国科学技术大学	2005	
	Hong Kong University of Science and Technology 香港科技大学	2005	★
	Nanjing University 南京大学	2006	★
	Shanghai Jiao Tong University 上海交通大学	2008	★
Indonesia	Xi'an Jiaotong University 西安交通大学	2008	
	Institut Teknologi Bandung	2006	
	University of Indonesia	2008	
	Gadjah Mada University	2012	
	Bogor Agricultural University	2013	
	Hasanuddin University	2014	
	Indonesian Institute of Sciences (LIPI)	2014	

Country/Region	Institution	Year of Conclusion	★
Korea	Kyungpook National University	1984	★
	Seoul National University	1991	★
	Yonsei University	1998	★
	Korea University	2002	★
	Korea Advanced Institute of Science and Technology	2005	
	Pohang University of Science and Technology	2007	★
	Konkuk University	2012	
Laos	National University of Laos	2007	
Malaysia	University of Malaya	2008	
Myanmar	Mandalay Technological University	2013	
	Yangon Technological University	2013	
Singapore	National University of Singapore	1999	★
	Nanyang Technological University	2013	
Taiwan	National Taiwan University 国立台湾大学	2005	★
	National Tsing Hua University 国立清华大学	2006	★
Thailand	Kasetsart University	1984	★
	Chulalongkorn University	2005	★
	Thammasat University	2012	★
	Mahidol University	2014	
	Chiang Mai University	2014	
Viet Nam	Vietnam National University, Hanoi	2007	
	Hue University	2007	
	Hanoi University of Technology	2009	
	University of Danang	2014	
<b>NORTH AMERICA</b>			
Canada	La Conference des Recteurs et des Principaux des Universites du Quebec	1994	★
	University of Waterloo	2003	★
	University of Toronto	2013	★
	McGill University	2014	
	The University of British Columbia	2014	
	Concordia University	2014	
USA	Wayne State University	1985	
	Stanford University	1989	
	University of California	1990	★
	Polytechnic University	1990	
	Brown University	1996	
	George Washington University	1998	★
	Tufts University	1998	
	University of Pennsylvania	1999	★
	University of Hawai'i	2003	★
	University of Michigan	2003	
	The University of Washington	2011	★
	University of California, Davis	2011	
	The Board of Trustees of the University of Illinois	2013	
	University of California, San Diego	2014	
Olin College of Engineering	2014		
The University of Notre Dame Du Lac	2014		

Country/Region	Institution	Year of Conclusion	★
LATIN AMERICA			
Brazil	Universidade de São Paulo	2014	
Mexico	University of Guadalajara	1983	★
EUROPE			
Austria	University of Wien	1993	★
Belgium	University Catholique de Louvain	2013	★
Czech	Charles University	1990	
Finland	University of Helsinki	2011	★
France	Le Consortium des Universites de Grenoble (I · II · III · Institut National Polytechnique de Grenoble)	2000	★
	École Normale Supérieure	2009	
	Université de Paris 7	2010	
	Université de Strasbourg	2010	★
	Centre national de la recherche scientifique	2013	
	Université de Bordeaux	2014	
	ITER International Fusion Energy Organization	2014	
	Agropolis International	2014	
Germany	Ludwig Maximilians University of Munich	1989	★
	Rhenish Friedrich Wilhelm University of Bonn	1990	★
	Rupert Charles University of Heidelberg	1990	★
	Free University of Berlin	1997	★
	Humboldt University of Berlin	1998	★
	Technische Universität München	2006	★
	University of Göttingen	2011	★
	Karlsruhe Institute of Technology	2011	★
	The University of Cologne	2013	
	Rwth Aachen University	2014	
Ireland	University College Dublin, UCD National University of Ireland	2014	
	University of Dublin, Trinity College Dublin	2014	
Italy	University of Siena	1989	
	University of Bologna	1995	
	Politecnico di Milano	2014	
Netherlands	Leiden University	1997	★
	University of Utrecht	1997	★
	University of Groningen	2013	
Norway	Norwegian University of Science and Technology	2014	
Poland	Jagiellonian University	2013	
Russia	Lomonosov Moscow State University	1987	
	Saint-Petersburg State University	2013	
Spain	Universidad de Barcelona	2014	
Sweden	Uppsala University	1997	★
	Stockholm University	1997	★
	Royal Institute of Technology, Stockholm	2005	★
	Lund University	2014	
Switzerland	Swiss Federal Institute of Technology Zurich	1989	
	University of Lausanne	1997	★
	University of Zurich	2013	

Country/Region	Institution	Year of Conclusion	★
UK	University of Sussex	1989	★
	University of Oxford	1991	
	University of Cambridge	1997	
	University of Nottingham	1999	
	University of Edinburgh	2005	
	University of Sheffield	2006	★
	University of Manchester	2006	★
	University of Bristol	2011	
	Institute of Education University of London	2011	
	University of Glasgow	2013	
	King's College London (KCL)	2014	
Ukraine	The National University of Ukraine "Kyiv Polytechnic Institute"	2013	
	Taras Shevchenko National University of Kyiv	2014	
<b>OCEANIA</b>			
Australia	The University of New South Wales	1998	★
	The University of Sydney	1999	★
	The Australian National University	2008	★
	The University of Queensland	2012	
	The University of Melbourne	2014	★
New Zealand	The University of Auckland	2012	★
<b>MIDDLE EAST</b>			
Israel	Tel Aviv University	1999	★
Saudi Arabia	King Abdulaziz University (KAU)	2014	
Turkey	Koç University	2011	★
<b>AFRICA</b>			
Botswana	The University of Botswana	2012	
Egypt	The Egyptian Academy of Science, Research and Technology	2010	
	Egypt-Japan University of Science and Technology	2012	
Guinea	University of Conakry	2013	
Sudan	University of Khartoum	2007	
<b>Others</b>			
	ASEAN University Network (AUN)	2009	
	United Nations University	2010	
	ASEAN+3 University Network (ASEAN+3 UNet)	2012	

★ General Memorandum and Student Exchange Agreement

Universities with Student Exchange Agreement Only:

- University of Hong Kong (2007)
- Chinese University of Hong Kong (2007)
- Fondation Nationale des Sciences Politiques [Sciences Po] (2009)
- University of Birmingham (2011)
- University of Newcastle (2011)
- Nankai University (2014)

Many of Kyoto University's individual faculties, graduate schools, institutes, and centers also have direct cooperation and exchange agreements with a broad range of institutions abroad. Details are available online.

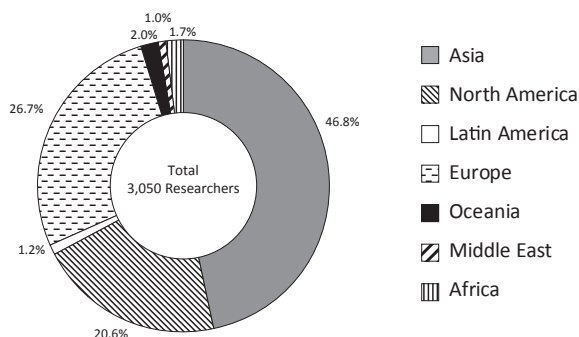
# RESEARCHERS FROM ABROAD

Country/Region	Number of Researchers
<b>ASIA</b>	
Bangladesh	13
Bhutan	16
Brunei	1
Cambodia	16
China	344
India	97
Indonesia	96
Korea	274
Laos	7
Malaysia	38
Mongolia	1
Myanmar	27
Nepal	31
Pakistan	3
Philippine	17
Singapore	34
Sri Lanka	4
Taiwan	157
Thailand	100
Timor-Leste	1
Viet Nam	111
Others (Asian Regions)	39
<b>NORTH AMERICA</b>	
Canada	121
USA	507
Others (North American Regions)	1
<b>LATIN AMERICA</b>	
Argentina	2
Brazil	15
Chili	6
Colombia	1
Dominica	1
Mexico	8
Peru	3
Others (Latin American Regions)	2

Country/Region	Number of Researchers
<b>EUROPE</b>	
Andorra	1
Armenia	1
Austria	16
Azerbaijan	1
Belgium	12
Bosnia and Herzegovina	1
Bulgaria	4
Croatia	9
Czech	15
Denmark	6
Estonia	4
Finland	17
Former Yugoslav Republic of Macedonia	3
France	148
Germany	154
Greece	7
Hungary	8
Iceland	2
Ireland	4
Italy	64
Kazakhstan	1
Liechtenstein	1
Luxembourg	1
Netherlands	38
Norway	9
Poland	14
Portugal	3
Romania	2
Russia	31
Serbia	4
Slovakia	7
Slovenia	3
Spain	22
Sweden	23
Switzerland	15
UK	152
Ukraine	5
Uzbekistan	1
Others (European Regions)	3

Fiscal Year 2013 (April 1–March 31)

Country/Region	Number of Researchers
<b>OCEANIA</b>	
Australia	44
Fiji	1
Kiribati	2
New Zealand	12
Papua New Guinea	1
Vanuatu	1
<b>MIDDLE EAST</b>	
Afghanistan	3
Iran	5
Iraq	1
Israel	12
Lebanon	1
Qatar	1
Saudi Arabia	1
Syria	1
Turkey	5
United Arab Emirates	1
<b>AFRICA</b>	
Algeria	1
Botswana	1
Burundi	1
Cameroon	2
Egypt	11
Ethiopia	6
Gambia	1
Kenya	4
Madagascar	1
Mozambique	1
Nigeria	2
Republic of Congo	1
Senegal	1
South Africa	3
Tanzania	5
Tunisia	1
Zambia	2
Others (African Regions)	1
Unclassifiable	1
Unknown	6
<b>Total</b>	<b>3,050</b>





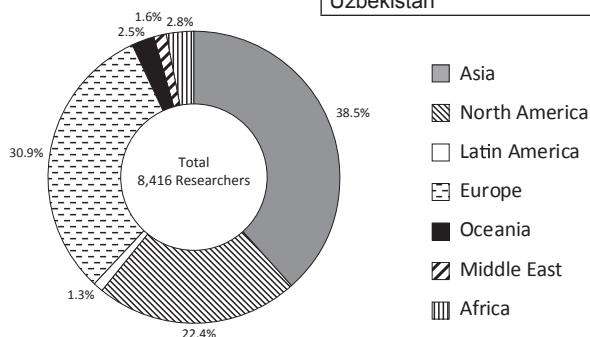
# RESEARCHERS GOING ABROAD

Country/Region	Number of Researchers
<b>ASIA</b>	
Bangladesh	24
Bhutan	31
Brunei	4
Cambodia	31
China	730
India	132
Indonesia	218
Korea	586
Laos	35
Malaysia	184
Mongolia	11
Myanmar	84
Nepal	26
Pakistan	7
Philippine	74
Singapore	198
Sri Lanka	11
Taiwan	375
Thailand	325
Viet Nam	156
<b>NORTH AMERICA</b>	
Canada	168
USA	1,721
<b>LATIN AMERICA</b>	
Argentina	3
Bolivia	3
Brazil	44
Chili	5
Costa Rica	2
El Salvador	1
Jamaica	2
Mexico	26
Peru	18
Saint Christopher and Nevis	1
Uruguay	3

Country/Region	Number of Researchers
<b>EUROPE</b>	
Armenia	5
Austria	79
Azerbaijan	5
Belgium	58
Bosnia and Herzegovina	2
Bulgaria	1
Croatia	6
Czech	34
Denmark	34
Estonia	5
Finland	53
Former Yugoslav Republic of Macedonia	2
France	464
Georgia	1
Germany	402
Greece	46
Hungary	31
Iceland	4
Ireland	22
Italy	261
Kazakhstan	6
Kyrgyz	3
Latvia	3
Lithuania	1
Luxembourg	3
Netherlands	108
Norway	12
Poland	46
Portugal	29
Romania	13
Russia	38
Serbia	3
Slovakia	10
Slovenia	5
Spain	134
Sweden	68
Switzerland	198
Tajikistan	2
UK	389
Ukraine	4
Uzbekistan	10

Fiscal Year 2013 (April 1–March 31)

Country/Region	Number of Researchers
<b>OCEANIA</b>	
Australia	167
Cook Islands	1
Fiji	9
Kiribati	1
Micronesia	2
New Zealand	23
Palau	2
Samoa	1
Others (Oceanian Region)	4
<b>MIDDLE EAST</b>	
Iran	3
Israel	18
Jordan	1
Kuwait	1
Oman	4
Qatar	6
Saudi Arabia	7
Turkey	77
United Arab Emirates	16
<b>AFRICA</b>	
Botswana	3
Burkina Faso	5
Burundi	1
Cameroon	22
Democratic Republic of the Congo	6
Egypt	10
Ethiopia	11
Gabon	10
Ghana	14
Guinea	7
Kenya	20
Lesotho	1
Madagascar	6
Malawi	1
Mali	1
Morocco	2
Namibia	9
Niger	2
Nigeria	1
Republic of Congo	3
Rwanda	2
Senegal	2
South Africa	12
South Sudan	9
Sudan	1
Tanzania	40
Tunisia	6
Uganda	16
Zambia	10
Others	1
<b>Total</b>	<b>8,416</b>



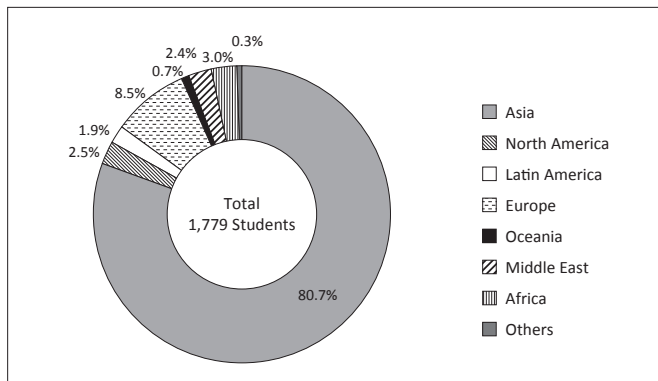
# STUDENTS FROM ABROAD

As of May 1, 2014

Country/Region	Undergraduate		Graduate students				Research Students	Total
	Under-graduates	Auditors	Master's Course	Doctoral Course	Professional Course	Auditors		
<b>ASIA</b>								
Bangladesh			1	9				10
Brunei				1				1
Cambodia			1	3	1	1	3	9
China	108	22	265	282	56	10	79	822
East Timor			1					1
India	2	1	2	16		1	5	27
Indonesia	7		12	28	1	6	7	61
Korea	60	8	39	94	6	1	18	226
Laos				1			1	2
Malaysia	3	1	2	15	1	2	1	25
Mongolia	1			5			3	9
Myanmar			4	7			1	12
Nepal			2	6				8
Pakistan			1	5			1	7
Philippines			1	3			1	5
Singapore	1	2					1	4
Sri Lanka			1	2				3
Taiwan	2	5	17	44	7	2	15	92
Thailand	4	4	10	33	2	4	2	59
Viet Nam	6	2	11	29	1	2	2	53
<b>NORTH AMERICA</b>								
Canada		11	3	3		1	1	19
USA		7	5	10	2		2	26
<b>LATIN AMERICA</b>								
Argentina	1							1
Bolivia				1				1
Brazil	2		4	4			2	12
Chile				1			1	2
Colombia				1				1
Ecuador				1				1
El Salvador							1	1
Guatemala							1	1
Mexico		2		2			1	5
Paraguay				1				1
Peru			1	3			1	5
Uruguay				1				1
Venezuela							1	1
<b>EUROPE</b>								
Austria				3		1		4
Azerbaijan			2	2			1	5
Belarus				1	1		1	3
Belgium				2				2
Bulgaria	1		1	2			2	6
Croatia				2				2
Finland	1	2	1	1				5
France		8	1	9	1	8	1	28
Georgia			1	1				2
Germany		4	2	4		8	2	20
Greece				1			1	2
Hungary	1	1		4				6
Ireland				1				1
Italy						2	1	3
Kazakhstan							1	1
Lithuania		1		2			1	4
Macedonia				1				1
Netherlands		2		1		2	1	6
Poland				2			2	4
Portugal				1				1
Romania			1				1	2
Russia			2	2		1	1	6
Slovakia						1		1
Spain		1	2	2		2	1	8

Country/Region	Undergraduate		Graduate students				Research Students	Total
	Under-graduates	Auditors	Master's Course	Doctoral Course	Professional Course	Auditors		
Sweden		4	1				1	6
Switzerland		1				1	1	3
Turkmenistan							1	1
UK		4	3	3			2	12
Ukraine			1	1			2	4
Uzbekistan			1	1				2
OCEANIA								
Australia	1	3		3				7
New Zealand			1	3			1	5
MIDDLE EAST								
Afghanistan			2				2	4
Bahrain			1					1
Iran			2	8			3	13
Iraq			2					2
Israel				1	1			2
Kuwait				1				1
Lebanon			1				1	2
Oman				1			1	2
Palestine			1					1
Syria			1	5				6
Turkey			2	3				5
Yemen			1	2				3
AFRICA								
Cabo Verde							1	1
Congo, DR			1	1			1	3
Egypt	2		1	12		1	2	18
Ethiopia				2			1	3
Gabon				1				1
Kenya	4			2				6
Liberia							1	1
Libya				3				3
Madagascar			2					2
Malawi				1				1
Morocco					1			1
Nigeria				1	1			2
South Africa			1	1			1	3
Sudan				1	1			2
Swaziland				1	1			2
Tunisia							1	1
Uganda					1		1	2
Zimbabwe				2				2
OTHERS								
Others*		6						6
<b>Total (97)</b>	<b>207</b>	<b>102</b>	<b>421</b>	<b>715</b>	<b>85</b>	<b>57</b>	<b>192</b>	<b>1,779</b>

\*Japanese nationals residing overseas (not included in total).

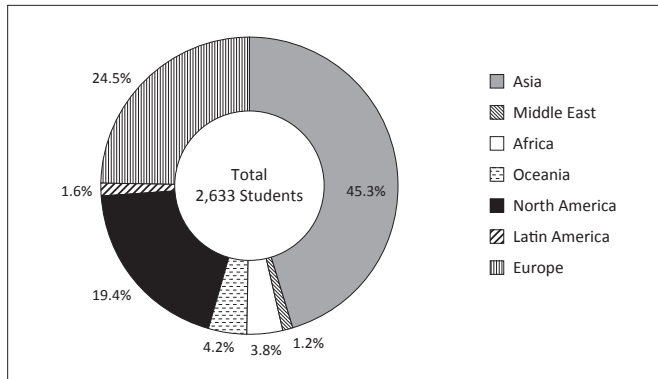


# STUDENTS GOING ABROAD

Fiscal Year 2013 (April 1–March 31)

Country/Region	Undergraduate		Graduate students				Research Students	Total
	Under-graduates	Auditors	Master's Course	Doctoral Course	Professional Course	Auditors		
<b>ASIA</b>								
Bangladesh			9	3				12
Bhutan	2		2	2				6
Brunei			3	6				9
Cambodia	1		6	14				21
China	41		86	102			1	230
China (Hong Kong)	8		1	1				10
India	3		16	36	1			56
Indonesia	20		21	28			1	70
Korea	21		57	98	1			177
Laos	2		3	12				17
Malaysia	2		32	44				78
Mongolia				3				3
Myanmar	2		2	8				12
Nepal			8	6				14
Philippines	7		10	12				29
Singapore	7		36	24				67
Sri Lanka			2					2
Taiwan	24		60	41	1			126
Thailand	29		57	61				147
Viet Nam	19		35	52			1	107
Others (Asia)	1							1
<b>MIDDLE EAST</b>								
Iran				3				3
Israel	3							3
Jordan				3				3
Kuwait	1							1
Lebanon				1				1
Oman			1	1				2
Palestine	1							1
Qatar			1	1				2
Saudi Arabia			1					1
Turkey	2		5	5				12
United Arab Emirates								1
Yemen				1				1
<b>AFRICA</b>								
Botswana				2				2
Burkina Faso			3	1				4
Cabo Verde				1				1
Cameroon			1	10				11
Central Africa				1				1
Congo, DR				6				6
Egypt				1				1
Ethiopia	1		1	5				7
Gabon				3				3
Ghana				3				3
Guinea				1				1
Kenya			4	2				6
Madagascar			1	1				2
Malawi				2				2
Morocco				1				1
Namibia			2	3				5
Rwanda				2				2
Senegal				3				3
South Africa			1	3				4
Swaziland				1				1
Tanzania			5	12				17
Uganda			4	4				8
Zambia			1	5				6
Others (Africa)				2				2
<b>OCEANIA</b>								
Australia	40		14	32				86
Fiji	1		7	2				10
New Zealand	3		5	6				14

Country/Region	Undergraduate		Graduate students				Research Students	Total
	Under-graduates	Auditors	Master's Course	Doctoral Course	Professional Course	Auditors		
<b>NORTH AMERICA</b>								
Canada	29		18	26		1		74
USA	75		152	207	3			437
<b>LATIN AMERICA</b>								
Argentina				1				1
Bolivia	1							1
Brazil			4	15				19
Chili			1					1
Costa Rica			2	4				6
Ecuador			1					1
Mexico	3		2	2				7
Peru			1	6				7
<b>EUROPE</b>								
Austria	2		1	8				11
Azerbaijan				2				2
Belgium	1			3				4
Bulgaria			1					1
Croatia				1				1
Cyprus			1					1
Czech			4	1				5
Denmark				2				2
Finland	2		4	6				12
France	11		22	59				92
Georgia			1					1
Germany	14		26	65	1			106
Greece			2	5				7
Hungary	1		2	4				7
Ireland	1			3				4
Italy	3		15	30				48
Kosovo			1					1
Malta	1							1
Netherlands	7		7	10				24
Norway			1	1				2
Poland			1	11				12
Portugal				5				5
Romania			1	1				2
Russia	2		2	5				9
Serbia			2	1				3
Slovakia				2				2
Spain	1		4	17				22
Sweden	5		4	7				16
Switzerland	7		9	21				37
UK	57	1	59	81	2			200
Ukraine			1					1
Uzbekistan				4				4
<b>Total</b>	<b>464</b>	<b>1</b>	<b>855</b>	<b>1300</b>	<b>9</b>	<b>1</b>	<b>3</b>	<b>2633</b>



# KYOTO UNIVERSITY INTERNATIONAL SYMPOSIA (Since 2001)

\*Gray cells indicate symposia organized under the 2x by 2020 international strategy.

Year	Date	Place	Theme	Co-Organizers
2014	Sep. 11–12	Stockholm & Uppsala, Sweden	The 1 <sup>st</sup> Sweden-Kyoto Symposium	Stockholm Univ., Uppsala Univ., KTH Royal Institute of Technology, & Karolinska Institutet
2014	Sep. 1–2	Kyoto, Japan	The 2 <sup>nd</sup> Kyoto Univ. & National Taiwan Univ. (NTU) Symposium	NTU
2014	Aug. 18–21	Bogor, Indonesia	Diversity and Conservation of Asian Primates	Bogor Agricultural University
2014	May 5–6	Bordeaux, France	The 1 <sup>st</sup> Bordeaux-Kyoto Symposium	Univ. of Bordeaux
2014	Mar. 21	Boston, USA	Risk, Perception and response Conference	Harvard University
2014	Jan. 9–10	Kyoto, Japan	The 2 <sup>nd</sup> Kyoto-Bristol Symposium	University of Bristol
2013	Dec. 19–20	Taipei, Taiwan	The 1 <sup>st</sup> National Taiwan Univ. (NTU) & Kyoto Univ. Symposium	NTU
2013	Nov. 21–22	Zurich, Switzerland	The 1 <sup>st</sup> Swiss-Kyoto Symposium	ETHZ, UZH, & EPFL
2013	Jan. 10–11	Bristol, UK	The 1 <sup>st</sup> Bristol-Kyoto Symposium	University of Bristol
2012	Jul. 27	Kyoto, Japan	Health Concerns in the Wake of Tohoku Triple Disaster	Harvard University
2012	May 24–25	Bangkok, Thailand	Partnering Asian Academics toward Human Security Development	ASEAN University Network
2011	Dec. 15–16	Kyoto, Japan	The Culture of Chinese Characters	AEARU
2011	Sep. 7–9	Istanbul, Turkey	Innovative and Sustainable Development	Koç University
2010	Sep. 19–20	Nagoya, Japan	Biodiversity, Zoos and Aquariums: The Message from Animals	Port of Nagoya Public Aquarium & Nagoya Higashiyama Zoo
2010	Jun. 24–27	Xi'an, China	International Conference on High Resolution Digitization of Asian World Heritage	Xi'an Jiaotong University
2009	Dec. 11–13	Kyoto, Japan	New Horizons of Academic Visual-Media Practices	
2008	Dec. 5–6	Kyoto, Japan	Transforming Racial Images: Analyses of Representations	
2008	Oct. 9–11	Shanghai, China	Frontier Bioscience in Modern Medicine	Fudan University
2007	Jul. 26–28	Bandung, Indonesia	Active Geosphere Science	Bandung Institute of Technology

Year	Date	Place	Theme	Co-Organizers
2007	Jun. 22–23	Kyoto, Japan	Integrating Global Environmental Studies towards Human Security	
2006	Nov. 23–25	Bangkok, Thailand	Towards Harmonious Coexistence within Human and Ecological Community on This Planet	
2005	Nov. 23–24	Bangkok, Thailand	Coexistence with Nature in a “Globalizing” World-Field Science Perspectives	Chulalongkorn Univ., Thammasat Univ., & Kasetsart Univ.
2005	Oct. 8–10	Beijing, China	Plant Sciences in Japan and China-from Genomics to Breeding	Chinese Academy of Agricultural Sciences
2005	Jan. 27–29	Singapore	Regulation of Cell Fate and Cell Function	The National University of Singapore
2003	Dec. 6–7	Ann Arbor, MI, USA	Self, Cognition, and Emotion	The University of Michigan
2002	Sep. 3–4	Montreal, Canada	Post-Petrofuels in the 21 <sup>st</sup> Century-Prospects in the Future of Biomass Energy	
2001	Nov. 28–30	London & Edinburgh, UK	The Changes in the Japanese Economy Facing the New Century	The Univ. of London & Univ. of Edinburgh
2001	Jan. 13	Santa Clara, CA, USA	Network and Media Computing	

# KYOTO UNIVERSITY

## CONTACT

### **For Researchers**

International Affairs Division

Yoshida-Honmachi, Sakyo-ku, Kyoto 606-8501

Tel: +81-75-753-2047

Fax: +81-75-753-2042

E-mail: [ipromo \[at\] mail2.adm.kyoto-u.ac.jp](mailto:ipromo@mail2.adm.kyoto-u.ac.jp)

URL: <http://www.kyoto-u.ac.jp>

### **For Students**

International Student Mobility Division

Yoshida-Honmachi, Sakyo-ku, Kyoto 606-8501

Tel: +81-75-753-2543

Fax: +81-75-753-2562

E-mail: [ryugak78 \[at\] mail.adm.kyoto-u.ac.jp](mailto:ryugak78@mail.adm.kyoto-u.ac.jp)

URL: <http://www.kyoto-u.ac.jp>